



www.sieraelectronics.com

904 92123

Product may vary from description.

Designed by Siera / Assembled in PRC.
Siera is a trade mark of the Siera Holding Group.



SAC 102

Bolt Lock

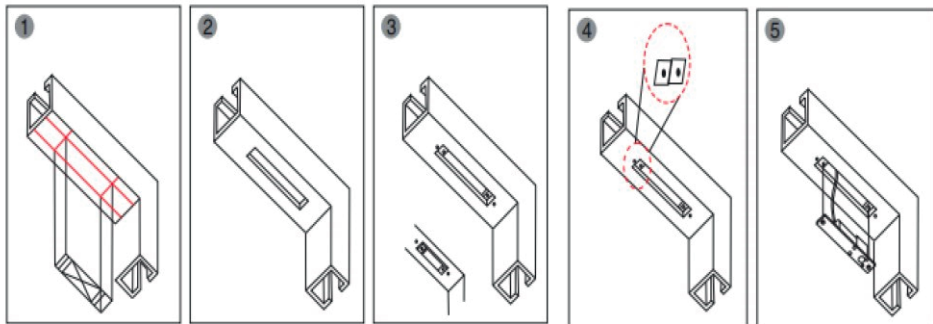
Product Features

SAC 102 is 5 wires bolt lock, range of drop bolts represent true engineering innovation, design excellence and the superior quality customers have come to expect and demand from Siera. It suit for wooddoor, metal door and glass door. Lower temperature

Applications

The 102 Bolt Lock can operate with any type of access control or intercom system as the sole means of locking, either hinged or pivot hung doors including 180 degree swing through doors. They are not recommended for sliding doors. It can also be applied to hinged doors as an additional locking device to add extra security and strength to a door set. The device is not weather resistant and should only be installed in a weather protected area

Installation



1 Place lock body template to match with door frame center line

2 Cut hole

3 Fix mounting plate (For hollow metal frame)

4 Connect wires

5 Mount lock body on the door frame and test

Installation Schematic



Specifications

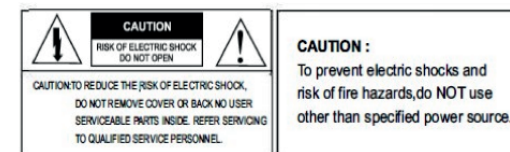
Size (unit: mm)	Voltage	Current	Suit for	Features	Weight
200Lx34Wx42H	12VDC	120mA	wood door, metal door, glass door	Signal Output. Low Temperature 0-6 seconds delay time	0.8kg

WARNING

To prevent fire or shock hazardous. Do not expose the unit to rain or moisture.

The symbol is intended to alert the user to the presence of important operating and maintenance (servicing) instructions in the literature accompanying the appliance.

The symbol is intended to alert the user to the presence of uninsulated dangerous voltage within the products enclosure that may be of sufficient magnitude to constitute a risk of electric shock to persons.



CAUTION :
To prevent electric shocks and risk of fire hazards, do NOT use other than specified power source.